

EPG Companies Inc.

19900 County Road 81
Maple Grove, MN 55311

Phone: 763-424-2613
800-443-7426
Fax: 763-493-4812
www.epgco.com

Quote Number: 33733

Page 1 of 1

TO:

EPG Companies Inc. (Multi Bidders)
USA

Date: 2/9/2024
Expires: 3/10/2024
Reference: Sandner El
Site: Sandner Electric IL
SalesPerson: Dan Fedor

<u>Qty</u>	<u>Part Number / Description</u>	<u>Unit Cost</u>	<u>Your Cost</u>
1	WSDPT 31-2 EPG WSDPT 31-2 Sure Pump patented, 6" Wheeled, 304 SS stainless Steel Sump Drainer with 5 HP. 460 VAC, 3 phase submersible motor. Includes: 175' of 12 AWG Jacketed motor lead, LT05X175P level Transducer with 175' and 175' of 3/16" stainless steel suspension cable with SS clamps, drilled check valve. Please Note: the WSDPT 27-2 Pump is obsolete this pump is closest to the 27-2 series original curve and dimensions.	\$11,872.00 EA	\$11,872.00
1	WSDPT 7-3 EPG WSDPT 7-3 Sure Pump patented, 4" Wheeled, 304 SS stainless Steel Sump Drainer with 1 HP. 460 VAC, 3 phase submersible motor. Includes: 175' of 14 AWG Jacketed motor lead, LT05X175P level Transducer with 175' and 175' of 1/8" stainless steel suspension cable with SS clamps, drilled check valve. Please Note: the WSDPT 8-3 Pump is obsolete this pump is closest to the 8-3 series original curve and dimensions.	\$6,803.00 EA	\$6,803.00

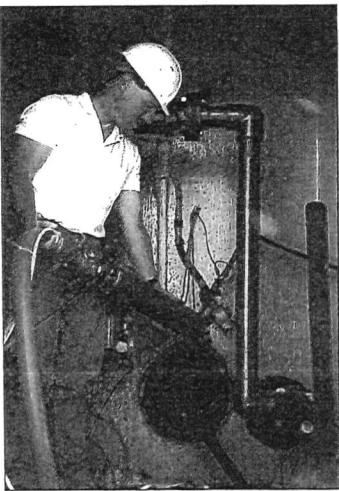
Sincerely,
EPG Companies Inc.



Dan Fedor

Applications Specialist

Patented, Stainless Steel Sump Drainer



Innovative, patented design and accurate level sensing are reasons EPG's SurePump is the leachate pump of choice among landfill professionals. With thousands of successful applications, SurePump offers proven reliability.

Unique design and wheel locations places at least four wheels in contact with the riser pipe surface at all times assuring easy installation and retrieval of the pump.

Patented submersible level sensor mounting located along the central axis of the sump drainer assures accurate, repeatable level control.

The EPG SurePump provides superior performance for both horizontal side slope riser and vertical sump applications. Both models are available in a wide range of flow rates, discharge heads and motor voltages. The SurePump, constructed of stainless steel, provides resistance to aggressive environments. Factory and field testing has shown that the integral E-Glide™ bearings

with better heat and wear resistance outlast Teflon* 4 to 1. The bearings and seal rings are bonded to the stainless steel rather than press fit. This allows the SurePump to work in applications where other designs fail.

All stainless steel construction for maximum performance in aggressive environments.

SurePump runs cooler than other pumps because the intake screen is located below the motor. The sealed top assures that the liquid is only drawn from the bottom over the motor.

SurePump sump drainer as a sealed unit with bottom intake provides maximum pump down levels in horizontal, vertical or inclined applications.

Multistage centrifugal pump permits smaller diameter pumps to be used in high discharge head applications. SurePump models are available for flow rates from 2 to 1,200 gpm.

SurePump motors are designed for use in aggressive environments and are available in a variety of voltages and single or three phase.

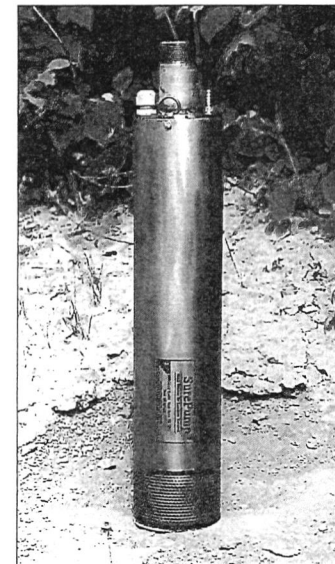
Vertical SurePump Sump Drainer

Stainless steel construction and broad range of sizes available, make SurePump the logical choice for your next lift station, sump, or load out application.

Patented vent valve system purges air from the sump drainer preventing pump air lock.

With no-splice, chemical and abrasion resistant motor and sensor leads, the SurePump is less work to install and assures greater system integrity in aggressive environments.

Equipped with EPG's E-Glide bearings, the SurePump lasts longer and performs better.



*Teflon is a registered trademark of DuPont.

The SurePump Wheeled Sump Drainer is protected by U.S. patent #4,966,534 and #4,992,030